



**DAYGALLERY**  
7th-29th May

**DAY & NIGHT**  
Jane Canfield



Front cover

**Night** 60.5 x 40.5cm

*Mixed media (oil) on Birch panel*

**\$2100**

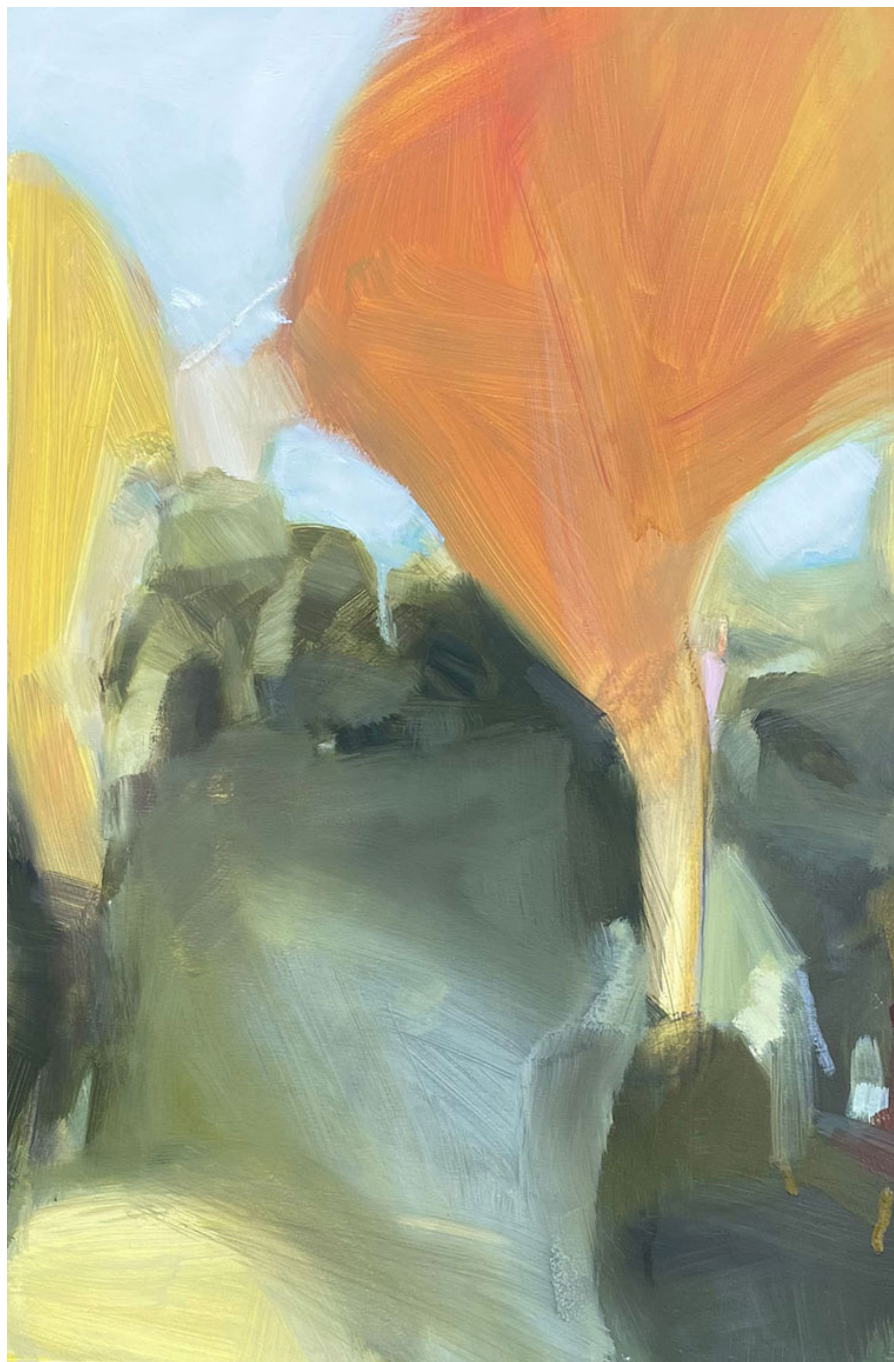
## Day & Night

I've long been intrigued by the early evening hours and inspired by the many interpretations by amazing painters. From Whistler's soft, moody, evocative nocturnes to Clarice Beckett's modern-before-her-time urban scenes, to contemporary artists practicing today.

The subtle light in the darkness, the colours, the cool air, and the shapes are even more restricted than in the daylight. I wanted these paintings to be 'opposites', the colour-popping out of the darkness. The 'Day' paintings, a contrast to the night shapes.

I have changed my practice slightly, working in the studio, off small plein air studies or drawings from remembered landscapes, interpreting them and turning them into semi abstracts, using the shapes and letting each painting find its own way. Something that I have been experimenting with. Working up close so that the marks and shapes are just that. Until I step back and then the shapes become a composition.

*Jane Canfield 2022*



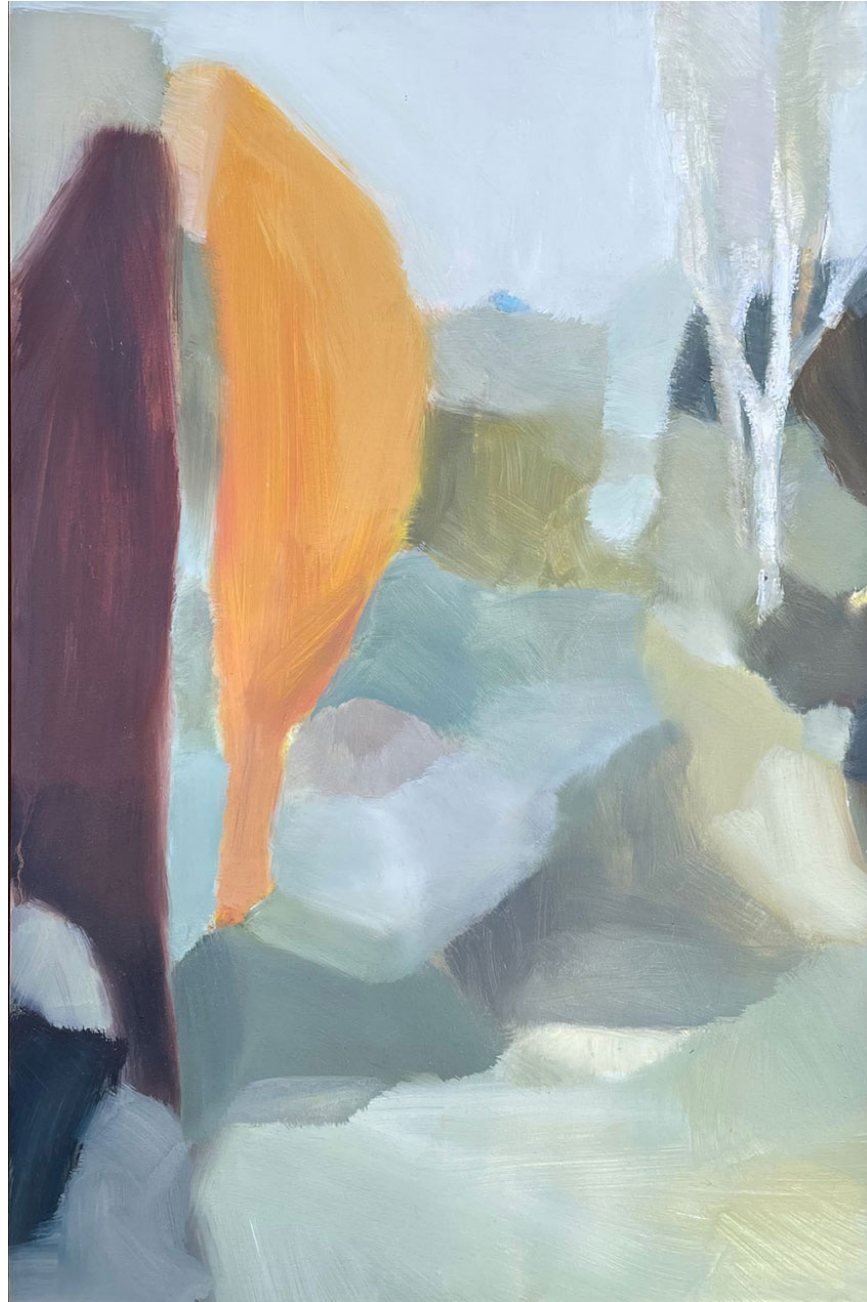
**Forest I** 60.5 x 40.5cm  
*Mixed media (oil) on Birch panel*

**\$2100**



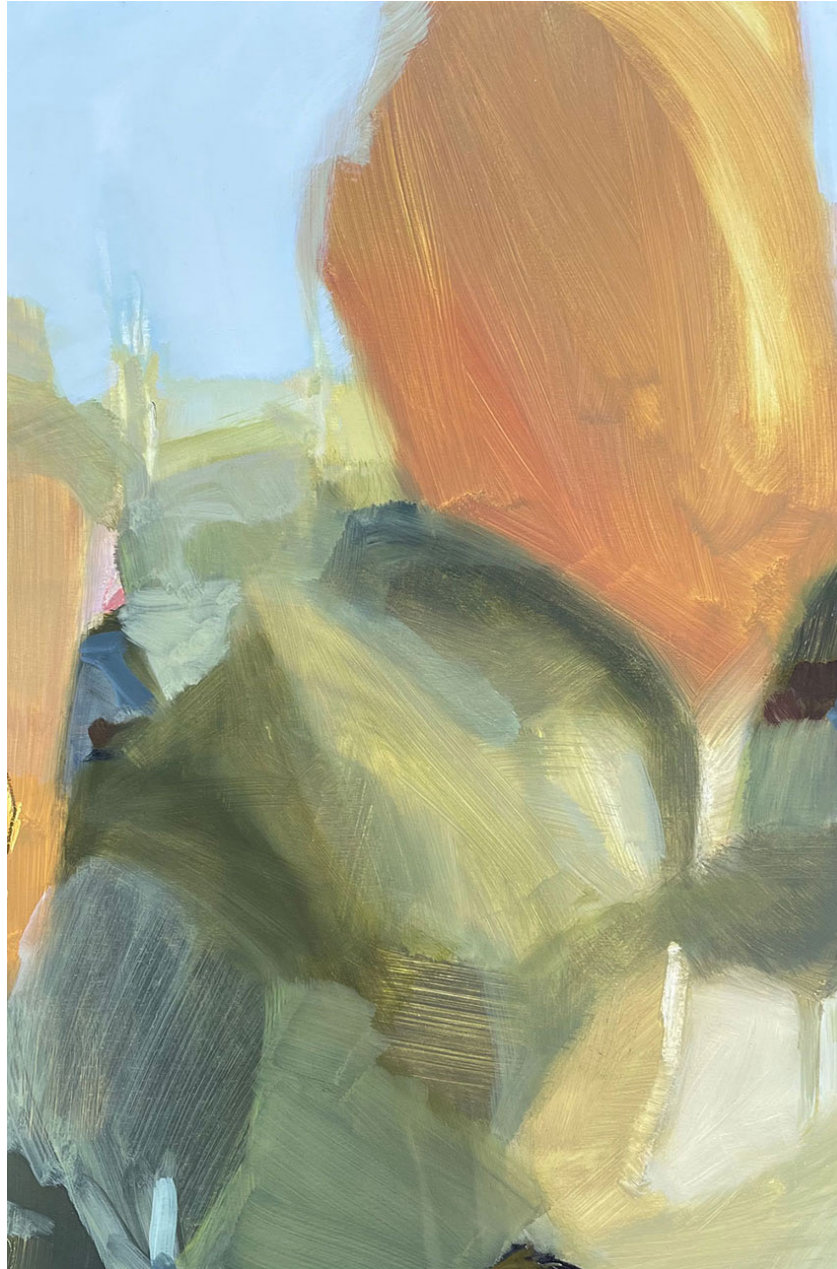
**Hampton Morning 60 x 150cm**  
*Mixed media (oil) on Birch panel*

**\$4500**



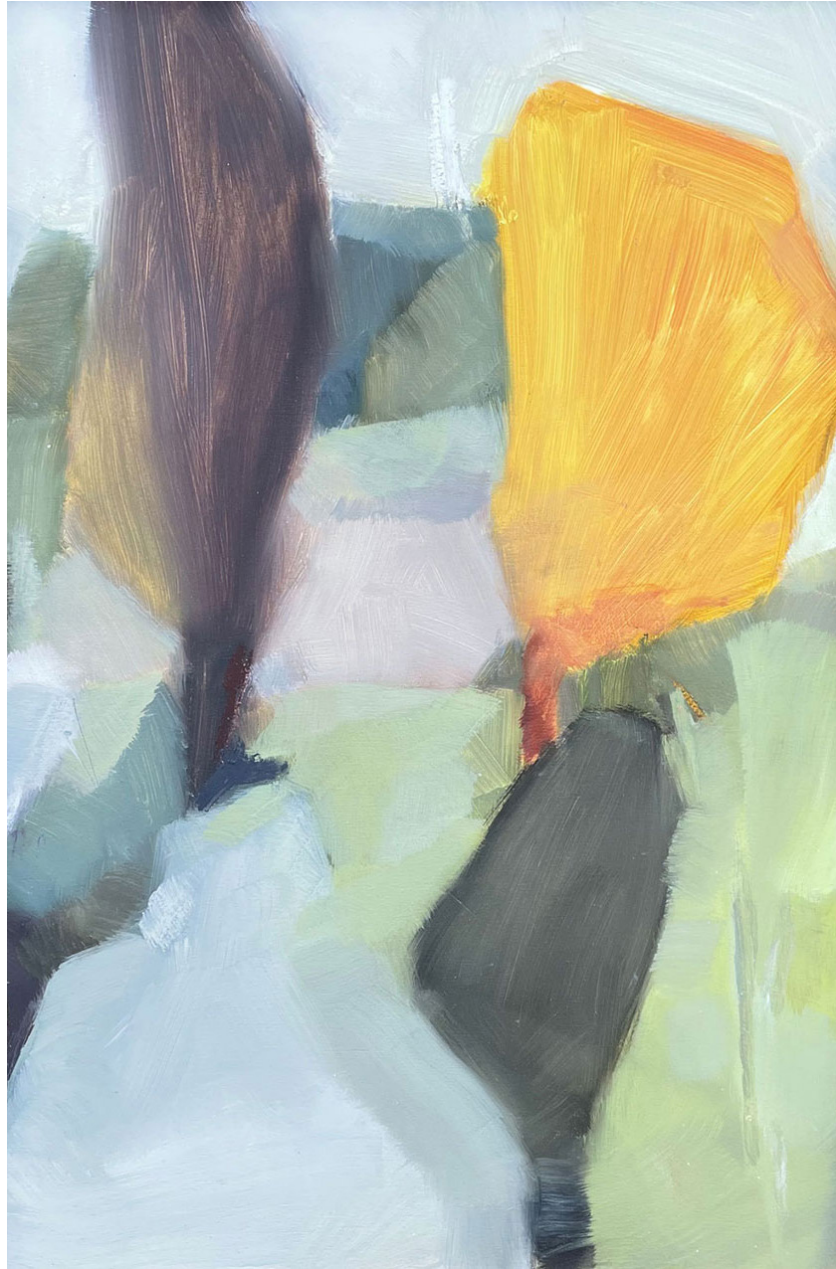
**Forest II** 60.5 x 40.5cm  
*Mixed media (oil) on Birch panel*

**\$2100**



**Forest III** 60.5 x 40.5cm  
*Mixed media (oil) on Birch panel*

**\$2100**



**Forest IV** 60.5 x 40.5cm  
*Mixed media (oil) on Birch panel*

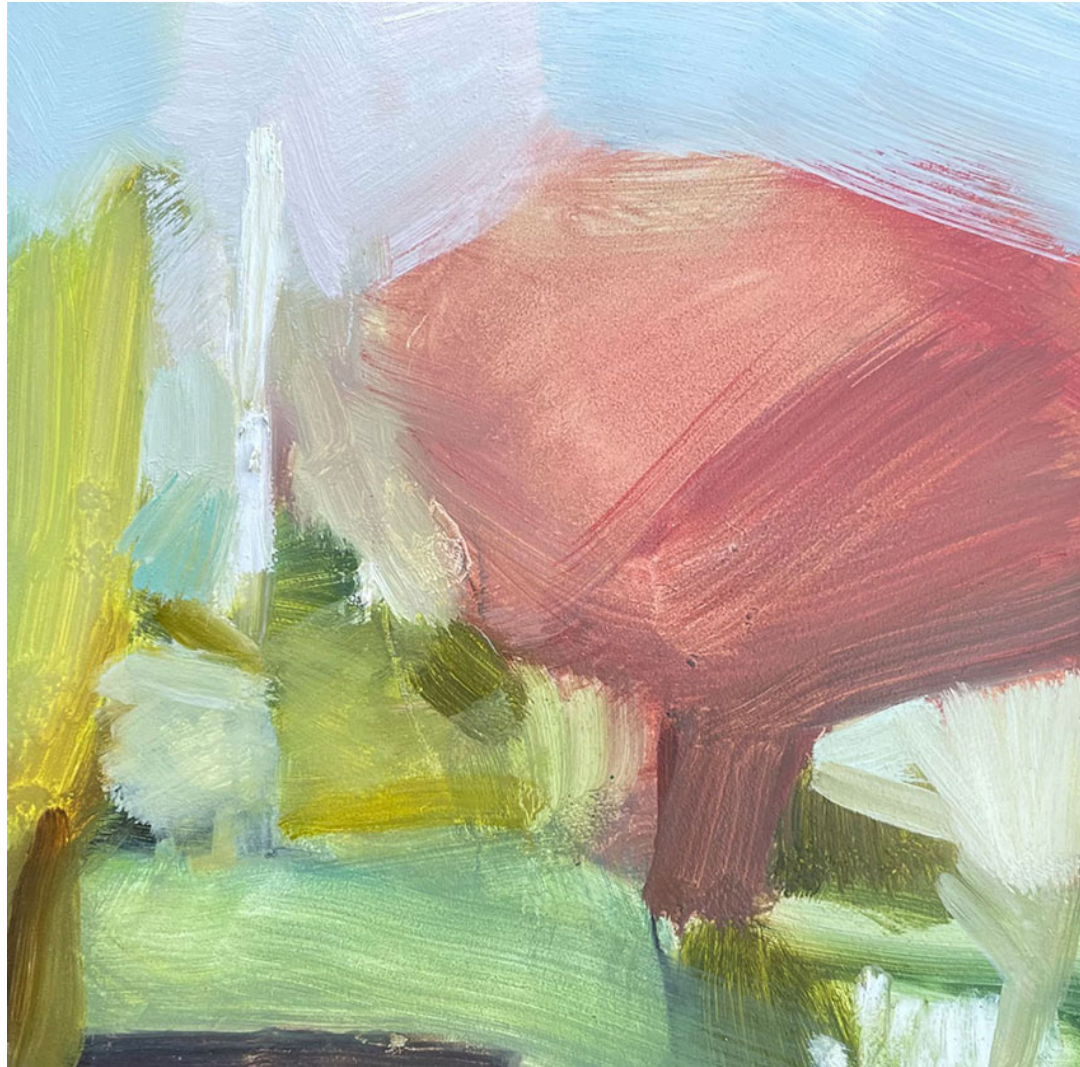
**\$2100**



**Woods** 40.5 x 60cm  
*Mixed media (oil) on Birch panel*

**\$2100**





**Forest with Blossom Tree**

20 x 20cm *Mixed media*  
*(oil) on board*

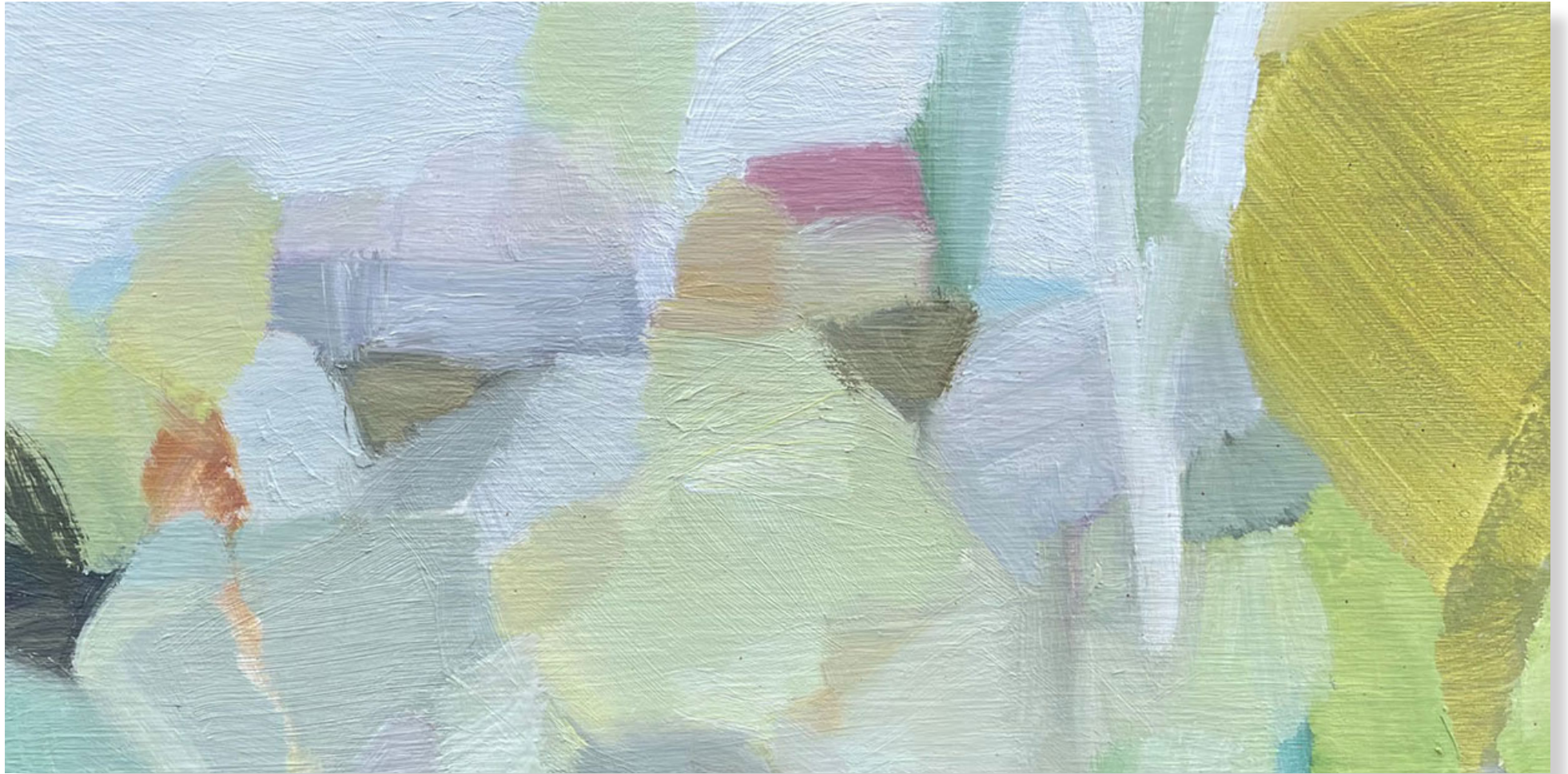
**\$680**



**Forest with Red Tree**

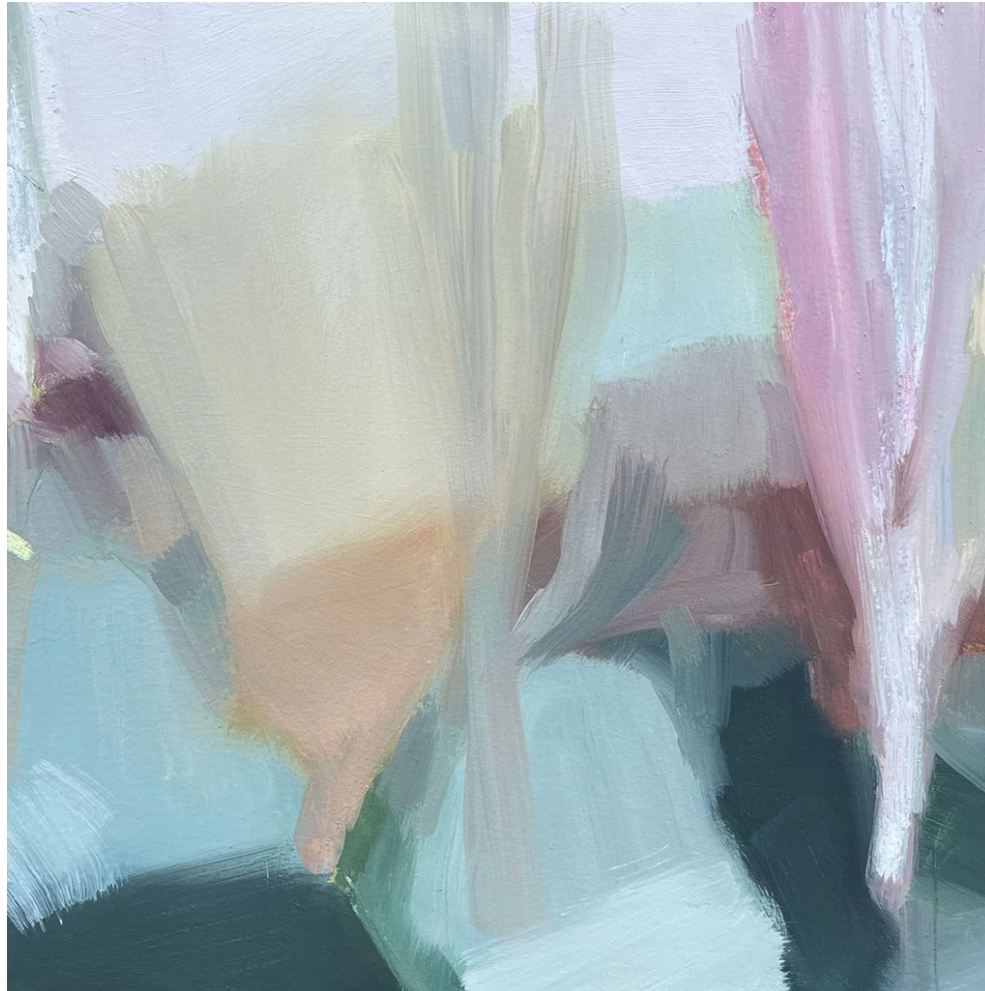
20 x 20cm *Mixed media*  
(oil) on board

**\$680**



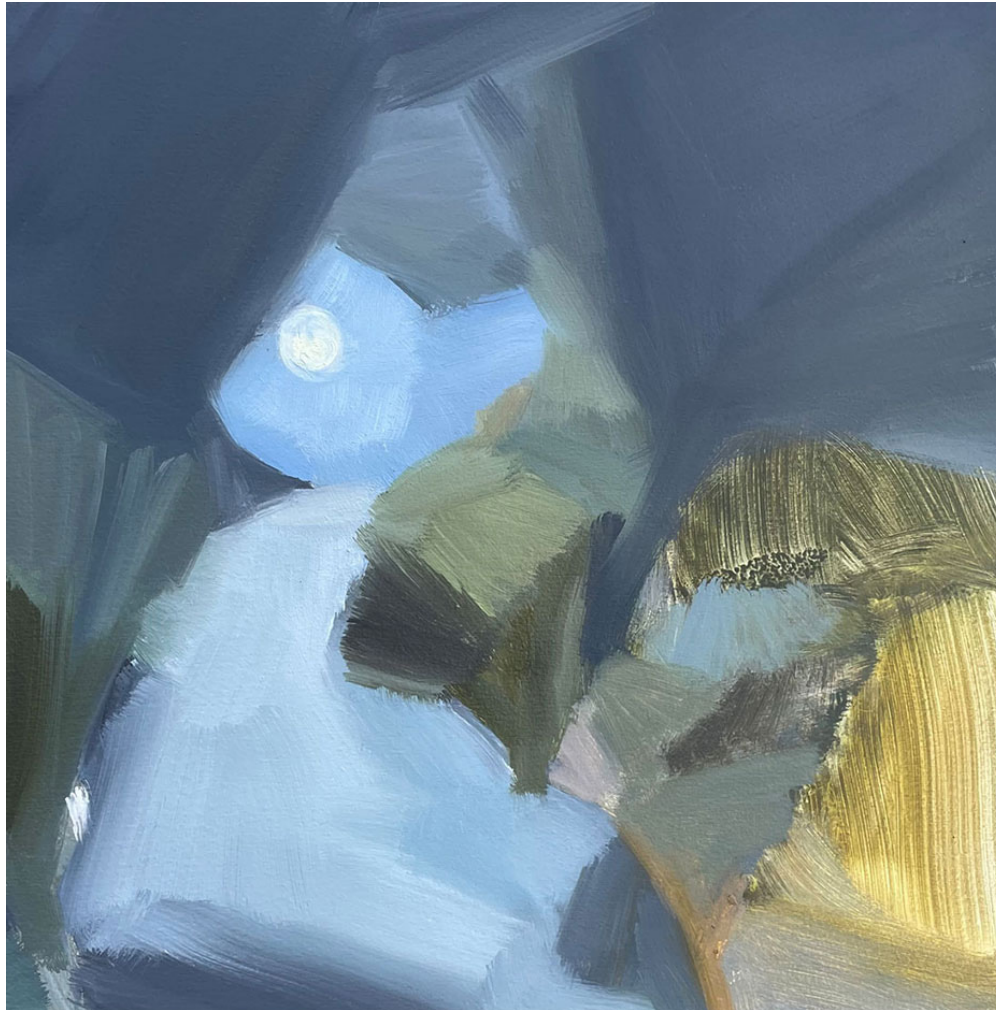
**Lidsdale Farm** 15 x 29.5cm  
*Mixed media (oil) on Birch panel*

**\$720**



**Early Morning 30 x 30cm**  
*Mixed media (oil) on Birch panel*

**\$1100**



**Night Walk II,  
Machattie Park**

30 x 30cm

*Mixed media (oil) on Birch panel*

**\$1100**

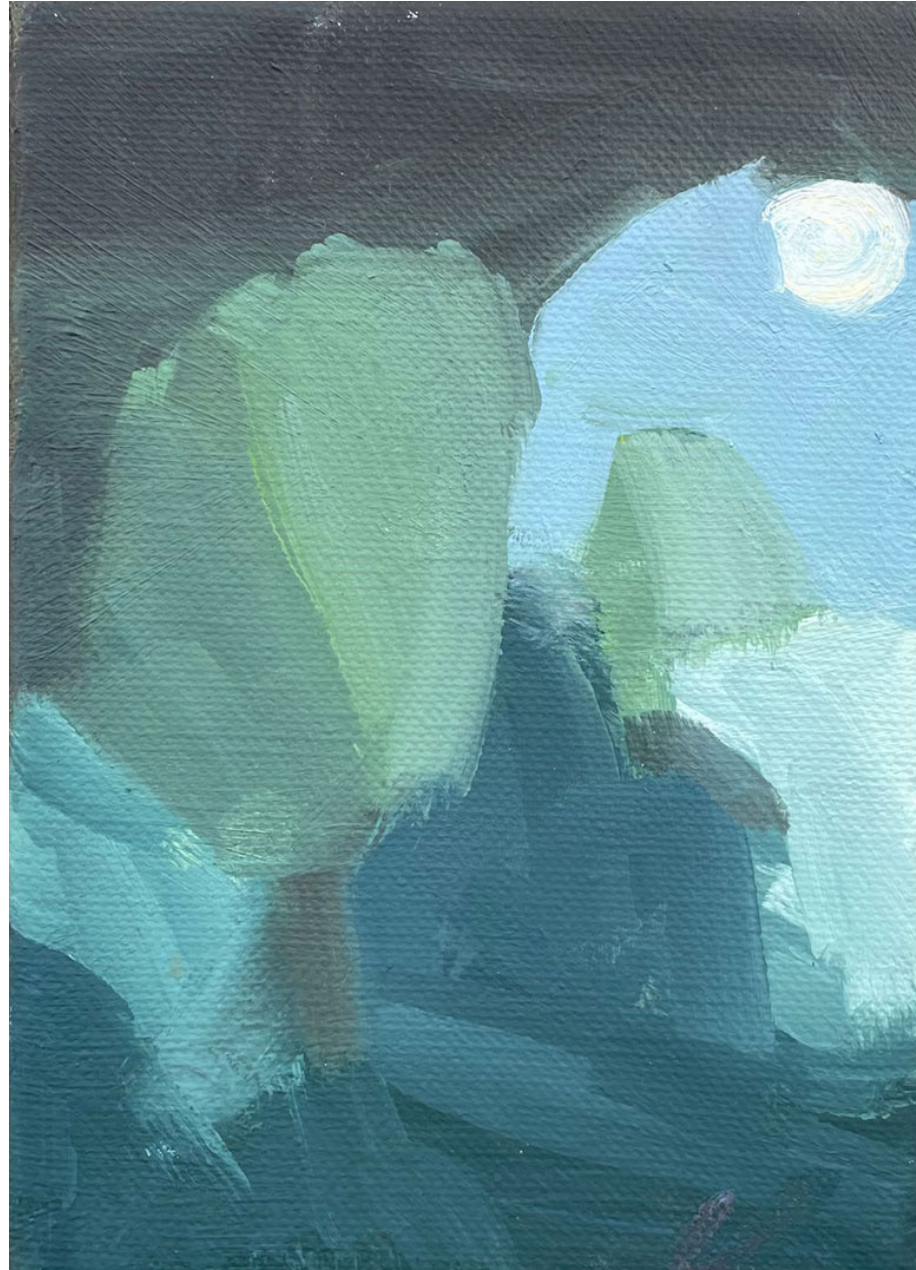


**Night Walk III,  
Machattie Park**

30 x 30cm

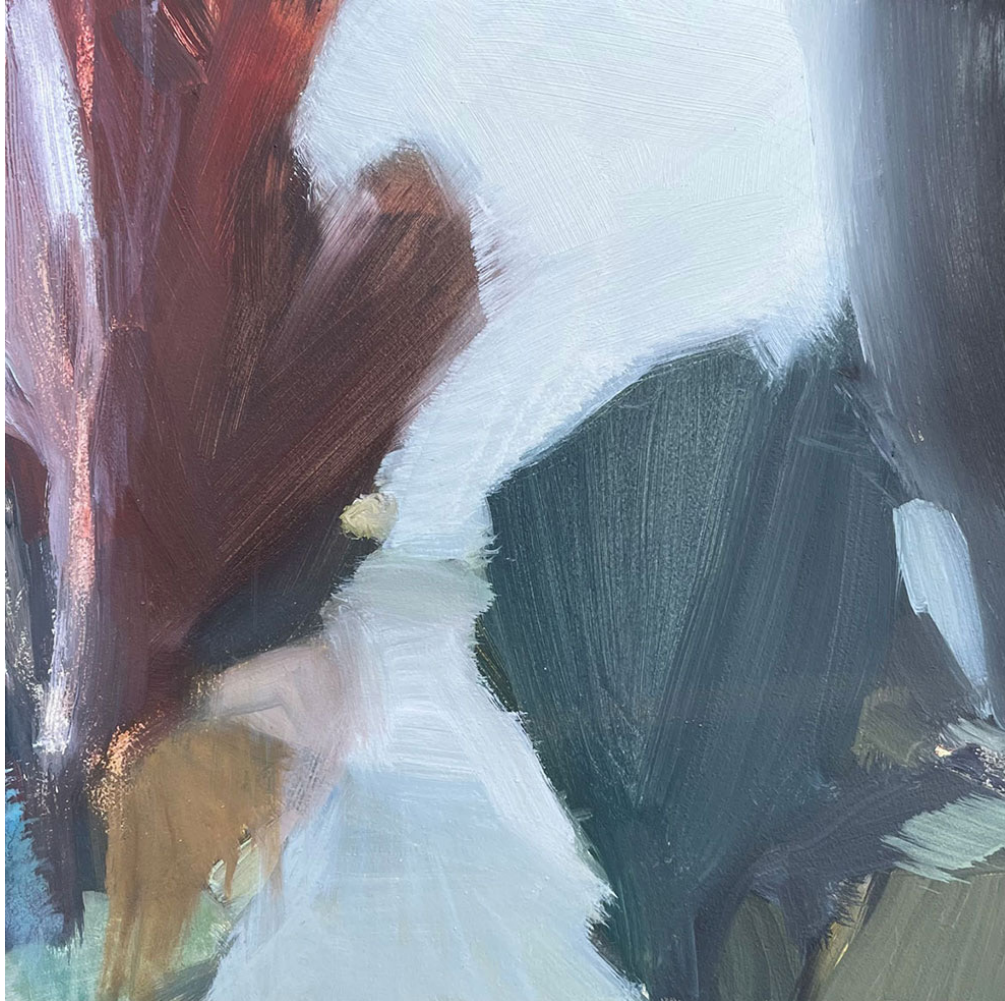
*Mixed media (oil) on Birch panel*

**\$1100**



**Night Walk IV,  
Machattie Park**  
17.5 x 12.5cm  
*Oil on canvas*

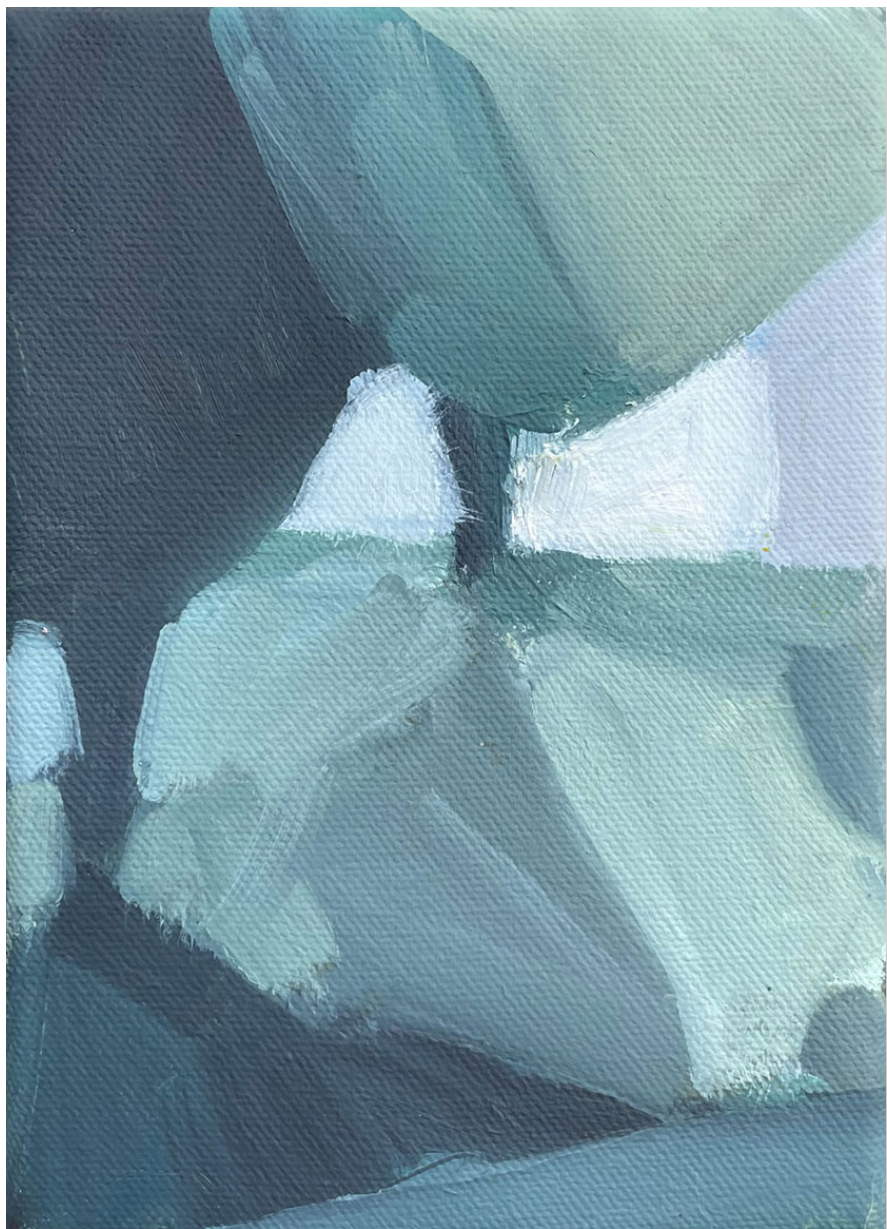
**\$550**



**Early Evening Walk**  
20 x 20cm  
*Mixed media (oil) on timber panel*

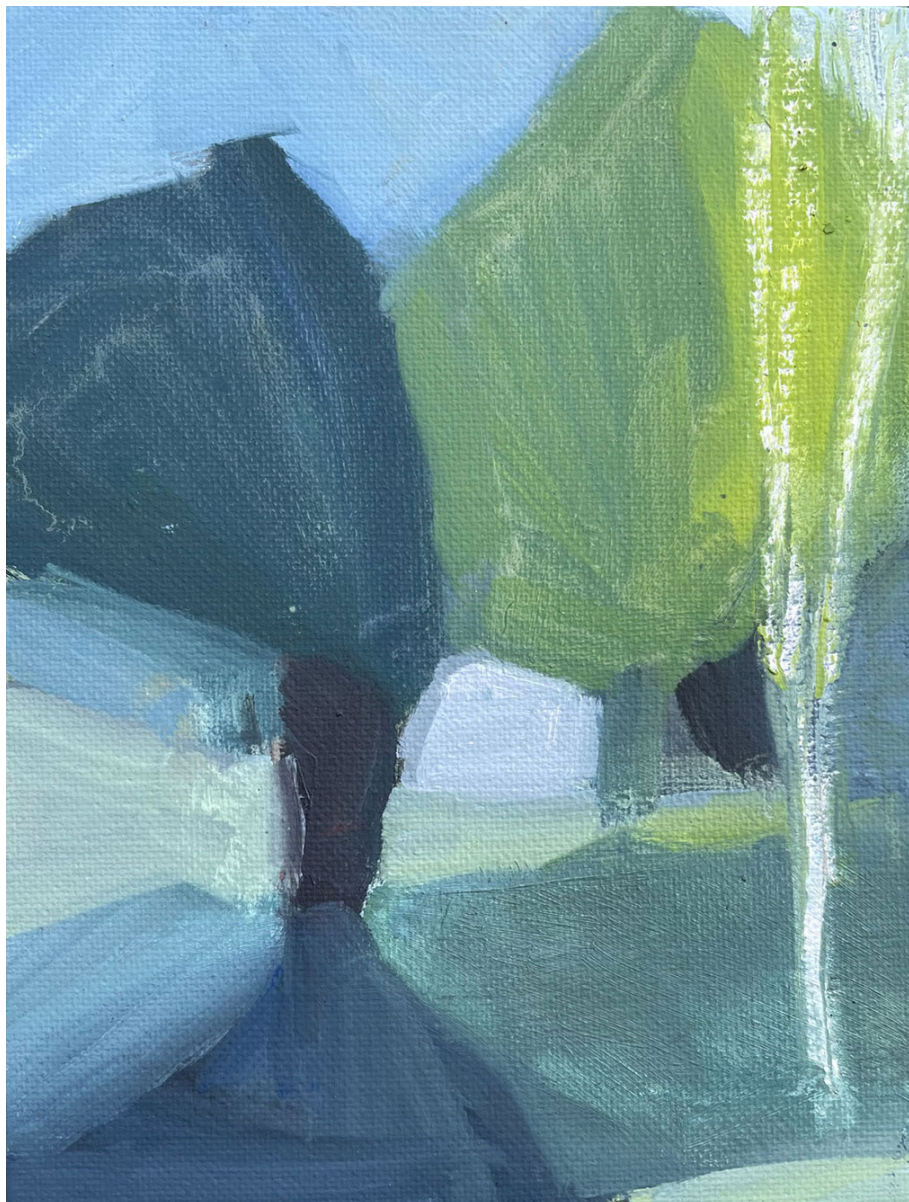
**\$680**





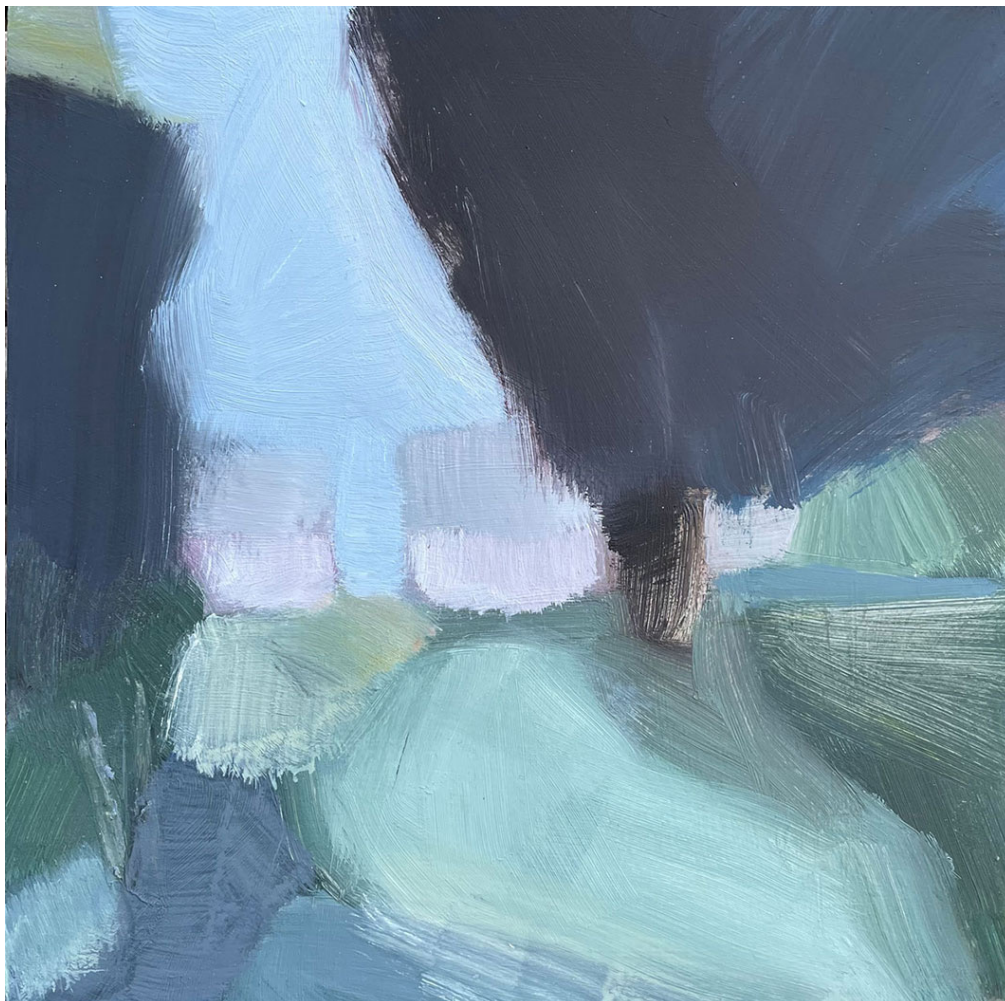
**Night** 17.5 x 12.5cm  
*Oil on canvas*

**\$550**



**Dusk** 20 x 15cm  
*Oil on canvas*

**\$620**

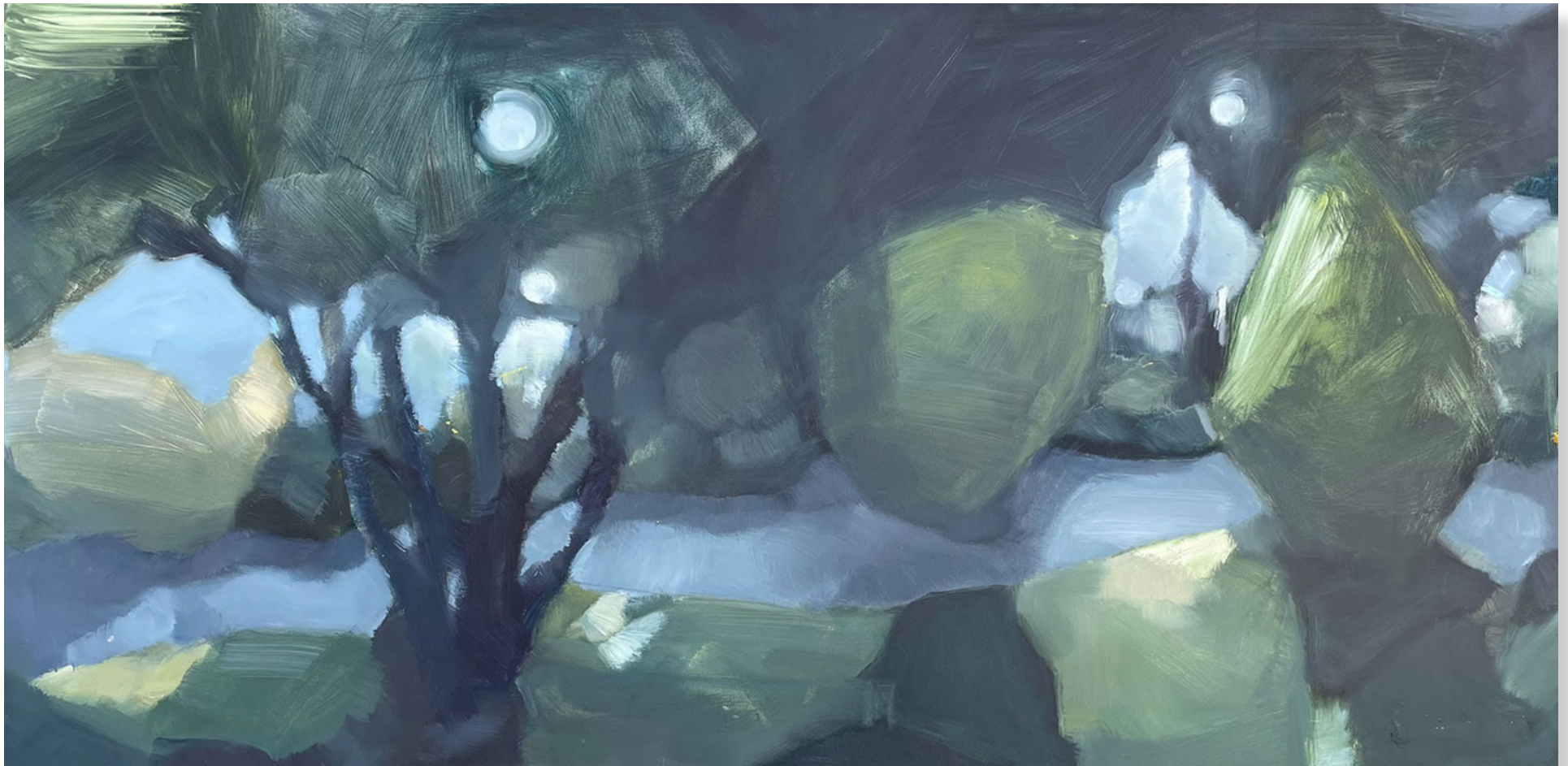


**Gardner's Cottage,  
Machattie Park**

20 x 20cm

*Mixed media (oil) on timber panel*

**\$680**



**Machattie Park, Night Walk** 60 x 120cm  
*Mixed media (oil) on Birch panel*

**\$3800**



**Yellow Tree at Night** 22.5 x 30.5cm  
*Mixed media (oil) on Birch panel*

**\$990**



**Night Walk V,  
Machattie Park**

30 x 30cm

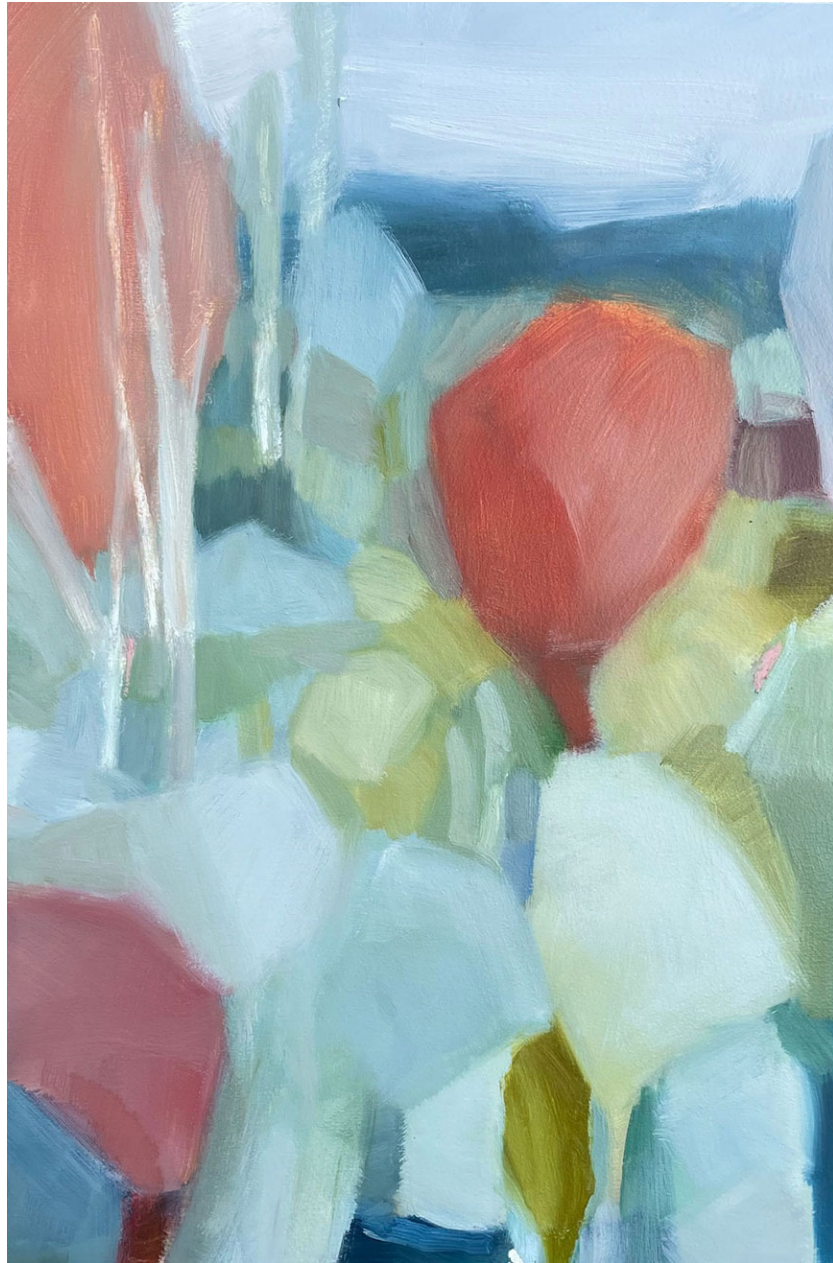
*Mixed media (oil) on Birch panel*

**\$1100**



Evening, Machattie Park, 22.5 x 30.5cm  
*Oil on Birch panel*

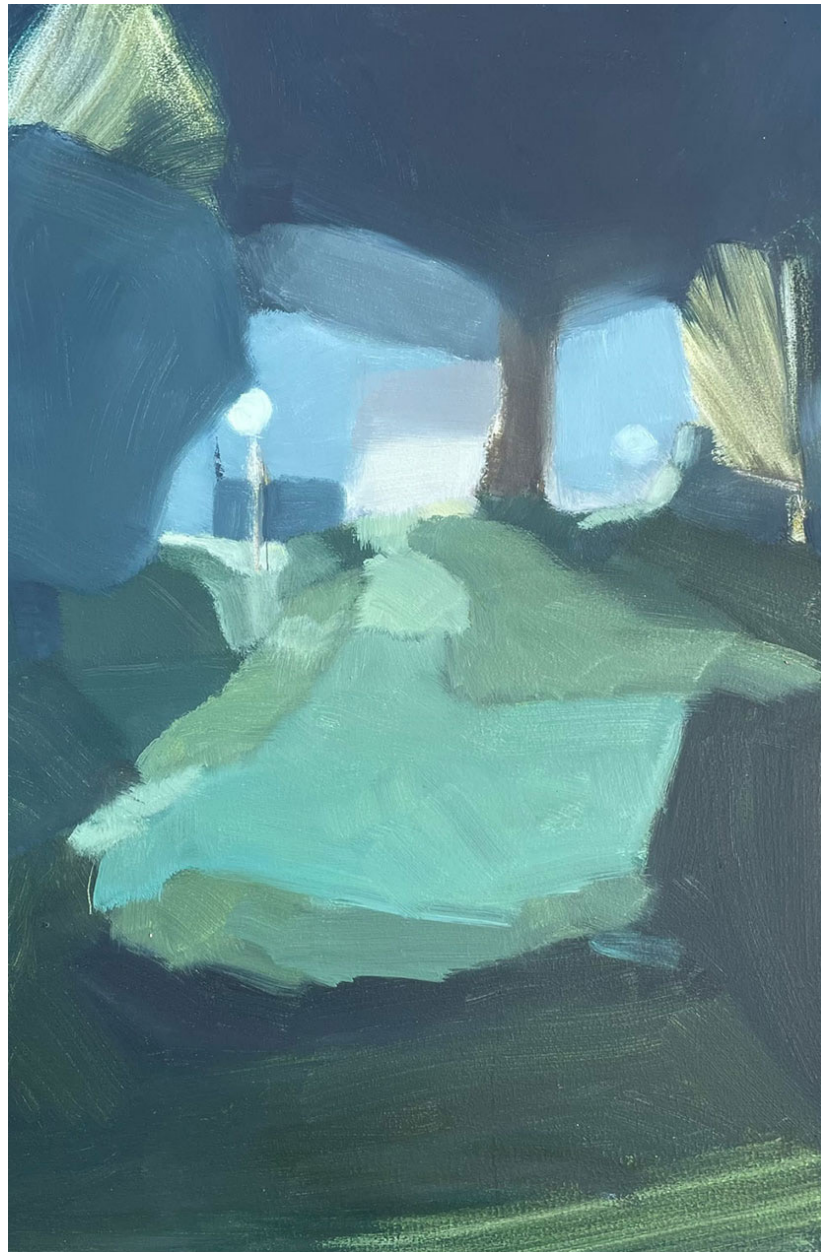
\$990



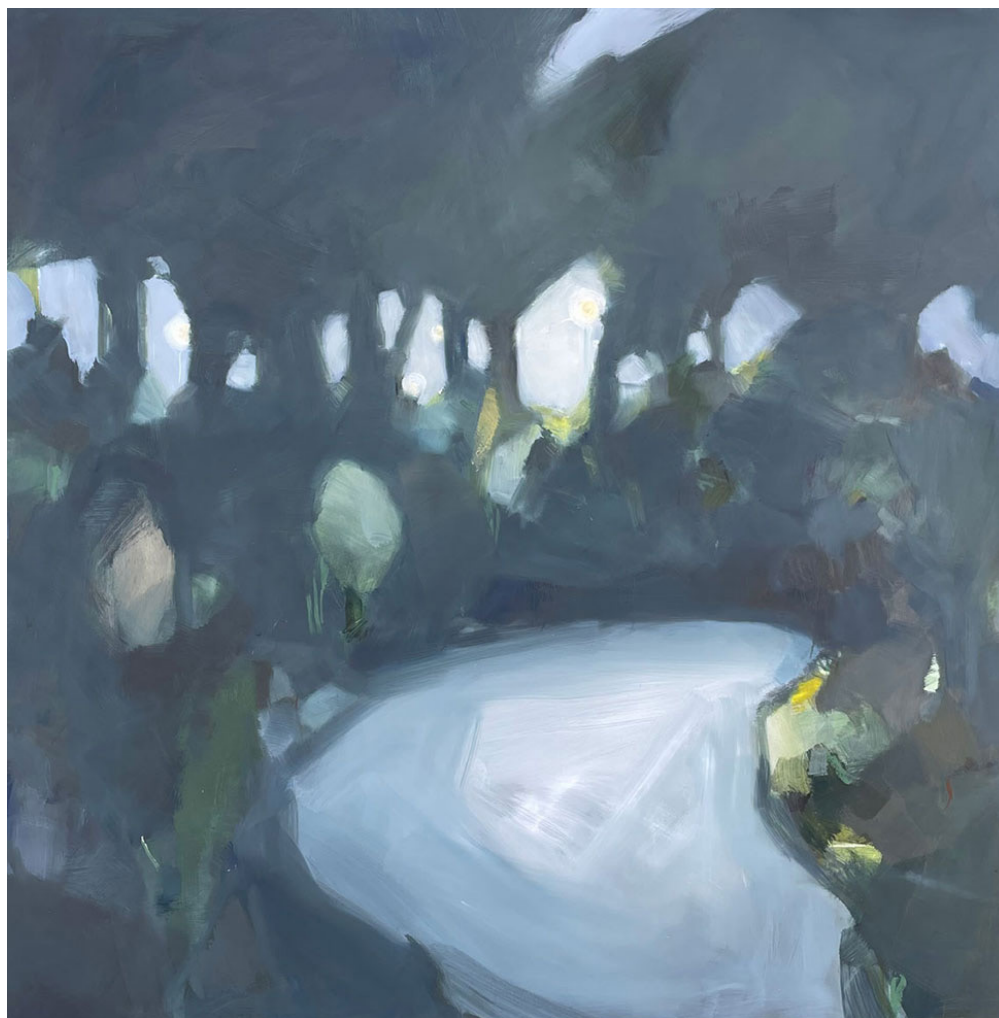
**Day** 60.5 x 40.5cm  
*Mixed media (oil) on Birch  
panel*

**\$2100**





**Night** 60.5 x 40.5cm  
*Mixed media (oil) on Birch panel*  
**\$2100**



**Pools of light,  
Machattie Park**

100 x 100cm *Mixed media  
(oil) on Birch panel*

**\$4800**



**Forest and Billabong**  
90 x 90cm  
*Mixed media (oil) on Birch panel*  
**\$4200**



**Nocturne, Forest**

138 x 197cm

*Mixed media on Polyester canvas*

**\$8600**



**Forest, Day** 138 x 197cm

*Mixed media on Polyester canvas*

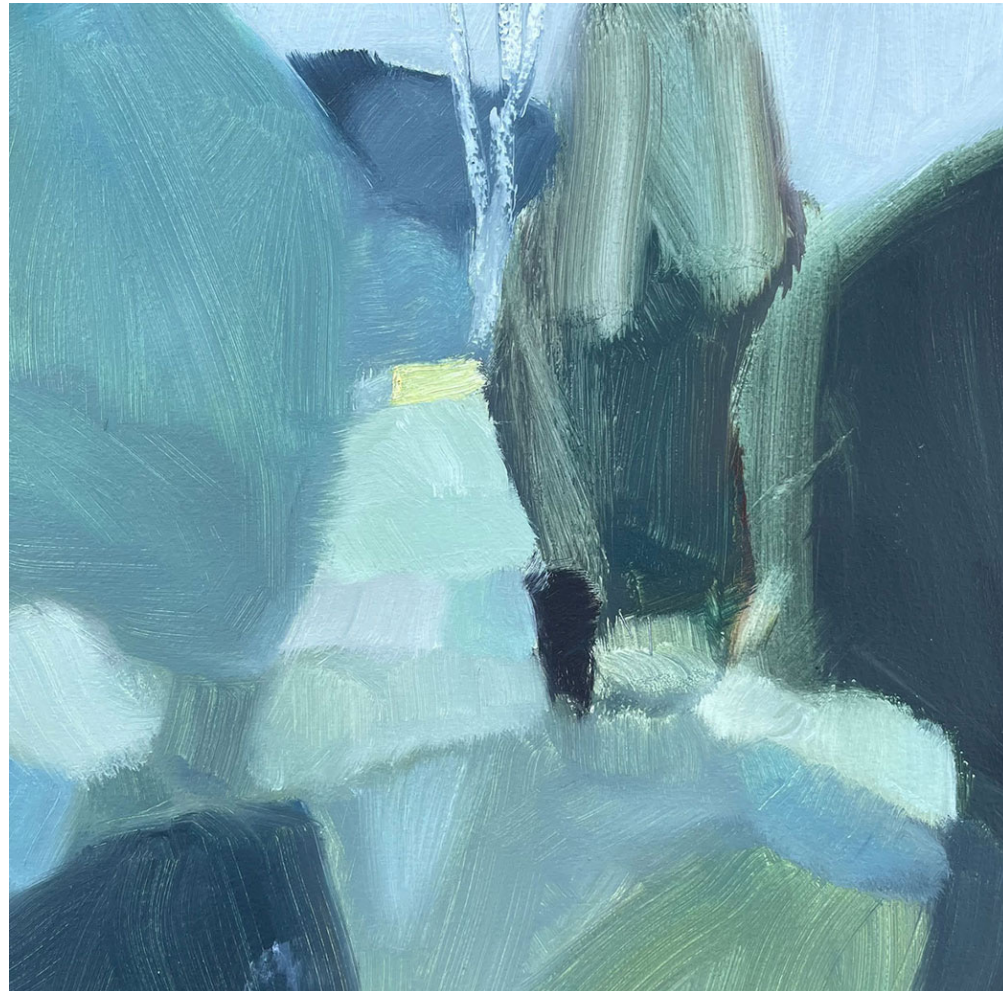
**\$8600**

Back cover

**Day** 60.5 x 40.5cm

*Mixed media (oil) on Birch panel*

**\$2100**



**Early Evening 30 x 30cm**  
*Mixed media on birch panel*

**\$1100**

An abstract painting featuring a vibrant palette of colors including red, orange, yellow, green, blue, and white. The brushstrokes are thick and expressive, creating a sense of movement and depth. The composition is non-representational, with various shapes and textures overlapping.

# DAYGALLERY

27-29 Govetts Leap Road, Blackheath NSW  
Vince Day 0404 930 120 • [info@daygallery.art](mailto:info@daygallery.art)

Open Fri-Sun 11am to 5pm or by appointment

[www.daygallery.com.au](http://www.daygallery.com.au)